

# Clarkstown Central School District

*A Legacy of Excellence*

## 2019-2020 Adopted School Budget Capital Projects Summary



*“How do we meet the needs of students  
in a fiscally responsible manner?”*

April 16, 2019

# Phase 5 Proposed Projects

## 2019/2020 Capital Reserve Utilization

### Projects

- ▶ Playgrounds
- ▶ Improvements at North
- ▶ Birchwood gym floor
- ▶ PD Center at CLC
- ▶ Maintenance equipment
- ▶ Improvements at South
- ▶ Paving and curbs

### Recommendation

- ▶ \$3,350K
- ▶ \$3,070K
- ▶ \$50K
- ▶ \$300K
- ▶ \$100K
- ▶ \$422K
- ▶ \$708K

# Capital Program Update

## **Phase 1 Capital / “Pay-As-You-Go” projects:**

- Status: Completed 2017
- Roofs: NHS, FFMS, LPES
- Boilers: NHS, SHS, FFMS, BW
- Transformers: NHS, FFMS, BW, LPES, BES
- Ceiling tile abatement: WGES, STES, WNES, NCES, NHS
- Masonry repair: NHS
- Auditoriums: SHS, FFMS
- Bridge repair: STES
- AHU replacements: FFMS
- Generator: BES

## **Phase 2 Capital:**

- Status: Completed 2018
- Roofs: LWES, LKES, LTES, WNES, STES, NCES
- Transformers: LWES, LKES, LTES, WNES

## **Phase 3 Capital (Summer 2019):**

- Status: In-Progress / Bids
- Roofs: SHS, WGES, BW, BES, CG, Transportation
- Transformers: SHS, WGES, STES

## **SHS Elevator (Summer 2019)**

- Status: In Progress / Design

# Capital Program Update

## **Phase 4 Capital (Summer 2020):**

- Status: In progress / design
- NHS and SHS turf fields
- SHS tennis courts
- New doors and store front at FFMS (A, B, C and D entrance walls) and BW
- New parking lot lighting at FFMS
- Site safety upgrades at LPES
- Drainage projects at FFMS and BES
- NHS auditorium seats
- Tel-Com district wide
- Building automation systems

## **Phase 4 Capital con't.**

- Water fountains
- Ventilation upgrades: FFMS E-wing AHU replacement
- FFMS auditorium lighting upgrade
- SHS auditorium audio upgrade
- NHS art lab
- NHS technology design lab
- FFMS pool deck repair
- FFMS secondary electrical panel upgrades
- FFMS workout room

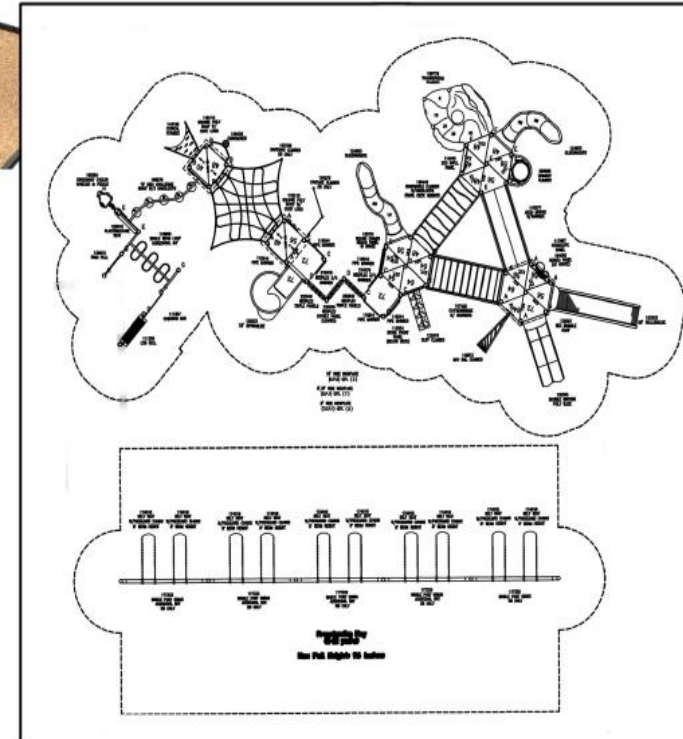
## **Phase 5 Capital (Summer 2021):**

- Status: Scope development

# Phase 5 Proposed Projects

## ▶ **Playgrounds**

- Majority have exceeded expected lifespan
- Increasing frequency of failures
- Replace aged equipment with new comparable equipment at 9 campuses
- District funded program
- Standardization for maintenance and parts





# Phase 5 Proposed Projects

## ► Improvements at North

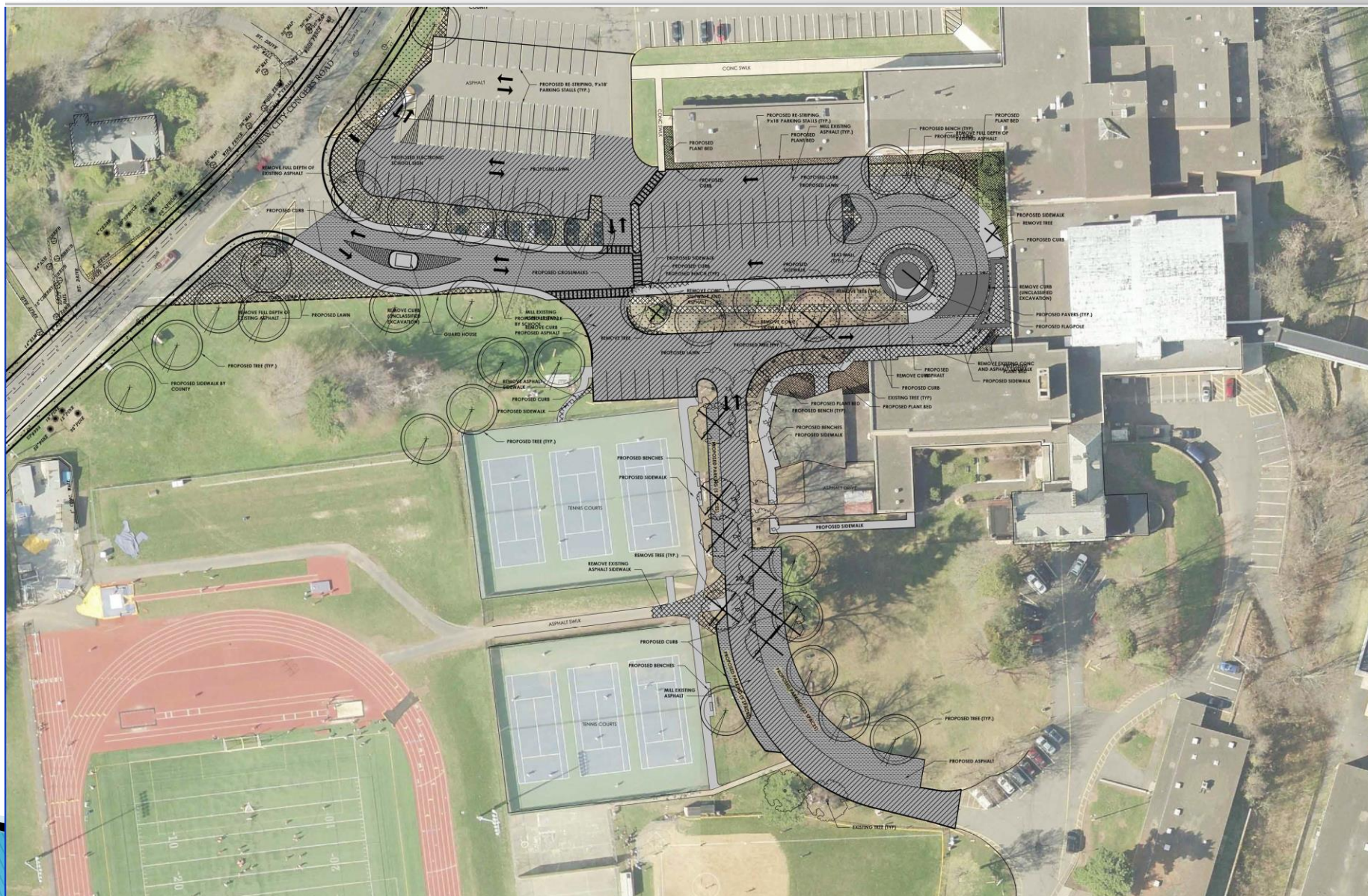
- Functional and aesthetic improvements for campus entrance, circulation and security
- New sign and associated landscaping
- New security booth optimally located
- New curbing, paving and walkways (main entrance and towards mansion)
- New waiting/pick up area
- Infrastructure for new lighting
- New lockers: boys / girls in main and annex locker rooms



Existing conditions:









# Phase 5 Proposed Projects

- ▶ **Birchwood gym floor**
  - Install new rubber gym floor
  - Existing floor not suitable for gym activities
- ▶ **Improvements at South**
  - New sign entry and associated landscaping
  - Weight room air conditioning & ceiling
- ▶ **Curbs and sidewalks at FFMS**
  - New curbs and sidewalks in horseshoe (A–B–D wings)
  - Addresses walkway safety issues – current sidewalks are in poor condition
- ▶ **PD Center at CLC**
  - New professional development center for teachers at CLC
  - Center of excellence for professional development
  - Creates needed space for alternative to suspension program at Chestnut Grove



**CLARKSTOWN**  
CENTRAL SCHOOL DISTRICT

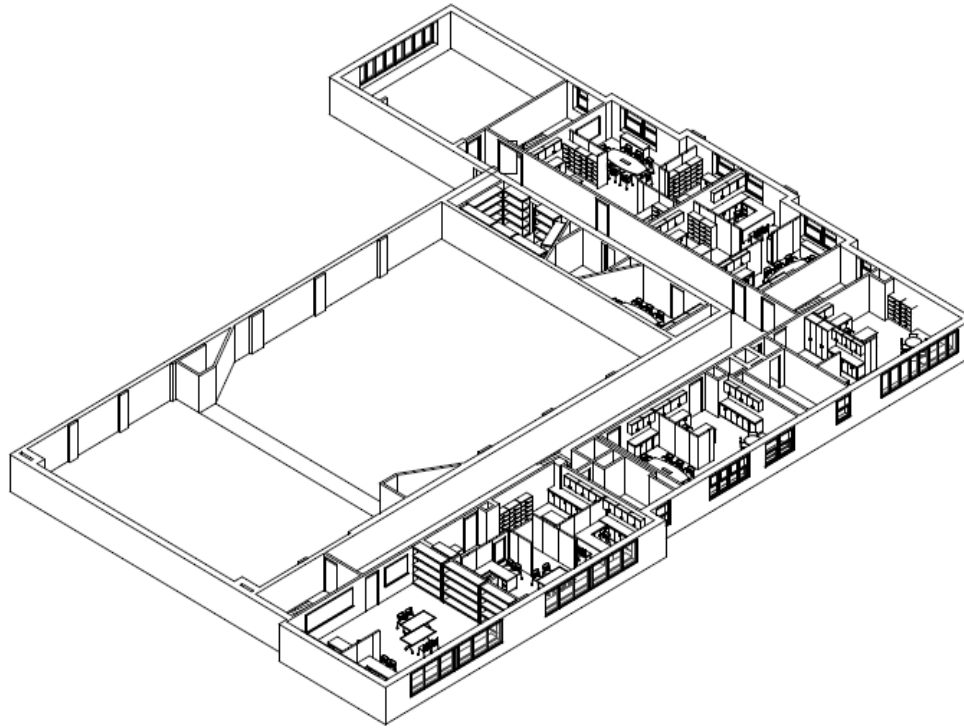
## PROPOSED ENTRANCE SIGN NORTH AND SOUTH



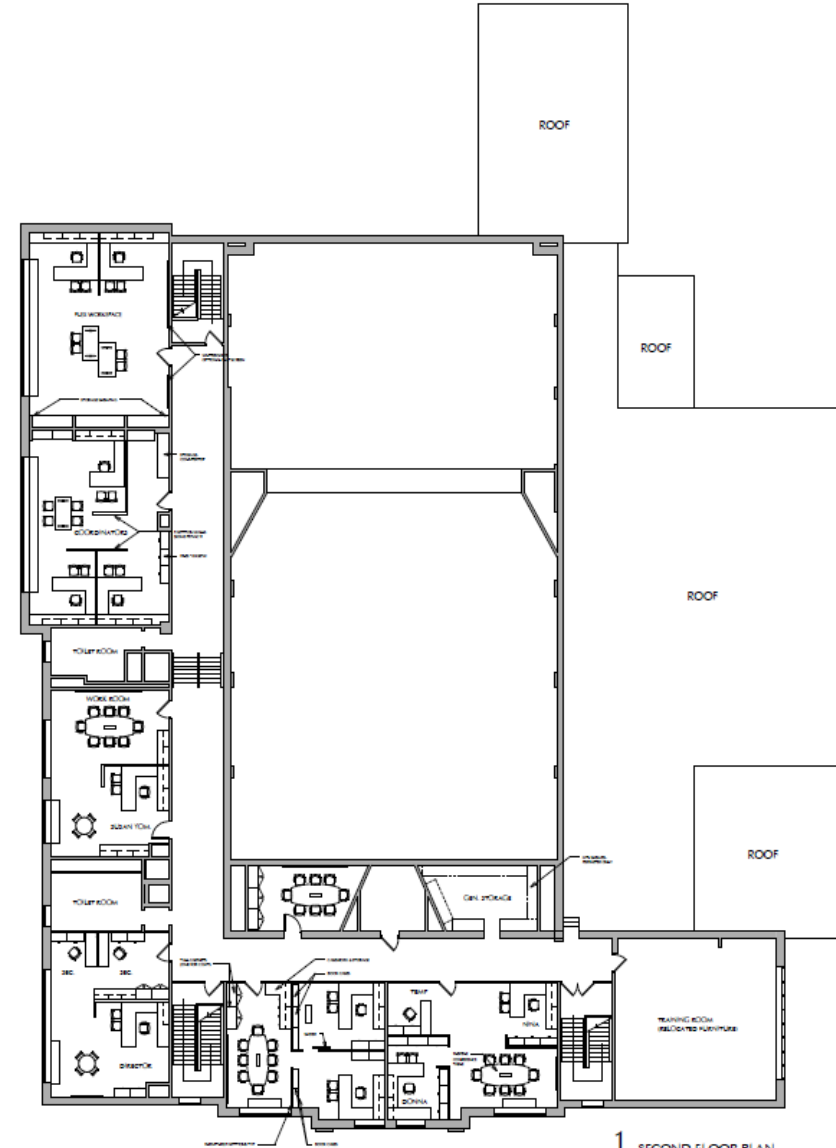








2 3D PERSPECTIVE  
A122



1 SECOND FLOOR PLAN  
A122 1/8"=1'-0"

**CLARKSTOWN CENTRAL SCHOOL DISTRICT  
NOTES TO FINANCIAL STATEMENTS  
FOR THE FISCAL YEAR ENDED JUNE 30, 2018**

**EXHIBIT 9**

**A) Bonds Payable:**

Bonds Payable is comprised of the following:

Description	Issue Date	Original Issue Amount	Final Maturity	Interest Rates	Outstanding at Year End
Tax certioraris	2004	\$900,000	April 2022	4.72%	\$275,000
Construction	2007	\$9,089,628	April 2022	3.50-5.00%	3,130,000
Construction	2008	\$12,308,730	April 2023	3.00-5.00%	5,235,000
Construction	2009	\$5,834,302	March 2024	3.00-4.00%	2,900,000
Refunding Bond Issue	2012	\$12,410,000	October 2022	2.00-4.00%	7,010,000
Refunding Bond Issue - Series A	2015	\$7,695,000	April 2024	2.00-5.00%	5,210,000
Refunding Bond Issue - Series B	2015	\$360,000	April 2024	1.75-4.00%	250,000
Construction	2016	\$5,440,875	November 2029	2.00-2.625%	4,740,000
					<u>\$28,750,000</u>

The following is a summary of debt service requirements for the bond payable:

Fiscal Year Ended June 30,	Principal	Interest	Total
2019	\$5,090,000	\$1,067,844	\$6,157,844
2020	5,285,000	862,806	6,147,806
2021	5,510,000	646,863	6,156,863
2022	5,110,000	433,163	5,543,163
2023	3,605,000	244,438	3,849,438
2024-2028	3,265,000	284,581	3,549,581
2029-2030	885,000	23,156	908,156
	<u>\$28,750,000</u>	<u>\$3,562,851</u>	<u>\$32,312,851</u>

**Unissued Debt**

On December 10, 2015, voters approved a bond authorization for a total estimated cost not to exceed \$36,161,198 to construct infrastructure and other improvements (including roofs, boilers, and transformers). The District has not issued this debt as of June 30, 2018, leaving authorized but unissued long-term debt in the amount of \$36,161,198. The District has issued a bond anticipation note for \$15,000,000, which is outstanding at June 30, 2018 for interim financing of these projects.

Capital Calendar						
July, 2018	July, 2019	July, 2020	July, 2021	July, 2022	July, 2023	July, 2024
Phase 2 Construction (Infrastructure)						
→	Phase 3 Construction (\$8.2M)					
Phase 4 Design	→	Phase 4 Construction (\$10.9M)				
	Phase 5 Projects (\$8.1M) Discuss Scope	→	Construction			
		BOND Discuss Scope	→	BOND Approval	→	BOND Construction

Phase 4 Projects					
FFMS and Birchwood Doors	Turf Fields (NHS and SHS)	Drainage	NHS Auditorium Seats and Audio	ADA	Water Fountain (Bottle Filler Station)
FFMS Parking Lot Lighting & Paving	SHS Tennis Courts	Ventilation Upgrades	Building Automation Systems	FFMS Pool Deck	NHS Art Lab
LPES Safety Upgrades	Tel-Com	Secondary Electrical Service	Auditorium Audio and Lights (SHS and FFMS)	FFMS Workout Room	NHS Design Lab