

# Clarkstown Central School District

## GPA Committee Update

---



# Essential Question

---



*How will the Clarkstown Central School District determine student grade point averages based on percentages from marking periods and Regents examinations scores?*





# History

---

*What is the  
root cause of the  
GPA Committee?*

*Scores were lower than  
desired on the Common  
Core Algebra Examination.*

# History

---

- GPA Committee met in 2015-16
- Superintendent recommendations to Board of Education in spring 2016
- The grading formula of 20% x 4 marking periods and 20% for Regents and Final Exams remain intact for 2016-17
- The new Superintendent to continue the process of determining the formula for students' GPA



# Where are we now?



# GPA Committee Members

---

- Rebecca Gorman, CHSS Student
- Gianna Policastro, CHSN Student
- Carolyn McKenna, CHSS Guidance Dept. Chair
- Stacie Bolin, CHSN Guidance Dept., Co-Chair
- Bryan Smith, CHSN Guidance Dept., Co-Chair
- Suzanne DiAngelo Coyle, CHSS Parent
- Irene Tagaris, CHSS Parent
- Shauna Wold, CHSN Parent
- Rachel Shinder, CHSN Parent
- Maureen Hampsey, CHSS Teacher
- Patricia Latin, CHSN Teacher
- Penelope Macias, CHSN Teacher
- Jonathan Schatz, FFMS Principal
- Dr. Harry Leonardatos, Principal CHSN
- Deb Tarantino, Principal CHSS
- Jeff Sobel, Assistant Supt. of Personnel
- Dr. Michael St. John, Secondary Curric. Coordinator
- Susan Yom, Assistant Supt of C&I
- Marty Cox, Superintendent of Schools
- Zizette Deutsch, BOE Member
- Tammy Bierker, BOE Vice President



# Meeting Dates

---

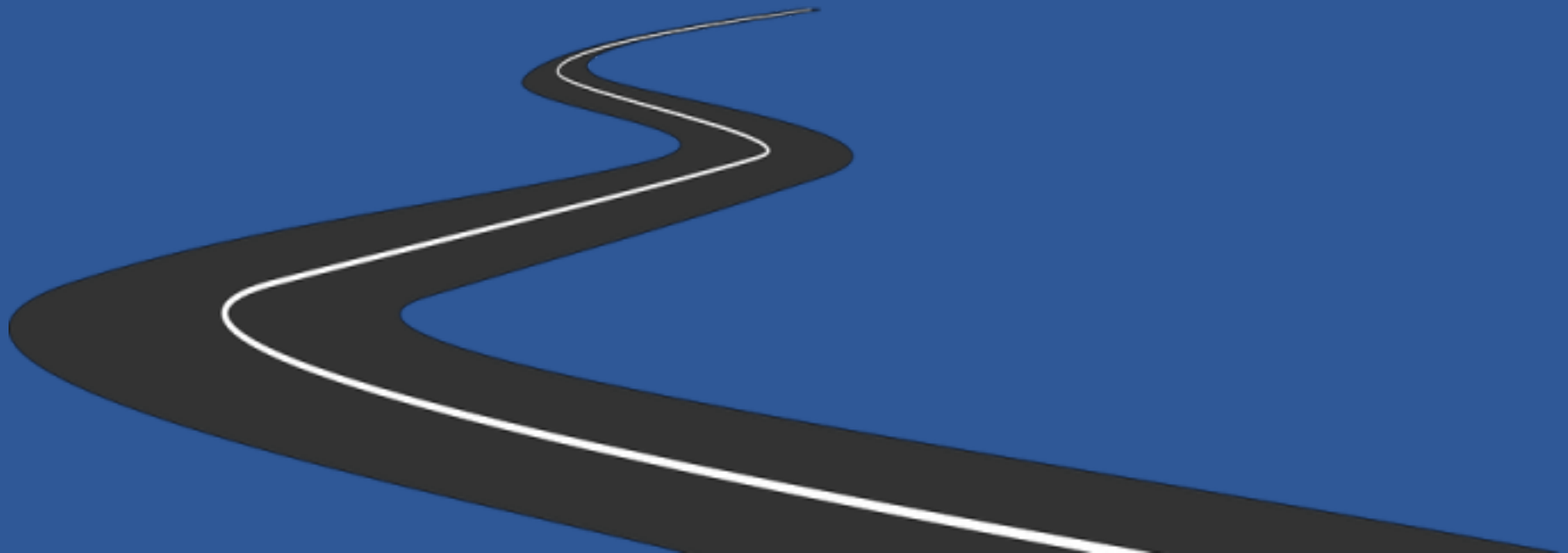
- November 3
- November 17
- December 8

@ 6:30 p.m. - 8:30 p.m.

In the BOE Conference Room

# What is the destination?

*Begin with the end in mind.*





# Essential Question

---



*How will the Clarkstown Central School District determine student grade point averages based on percentages from marking periods and Regents examinations scores?*



What are the

key elements of the

process we will use?

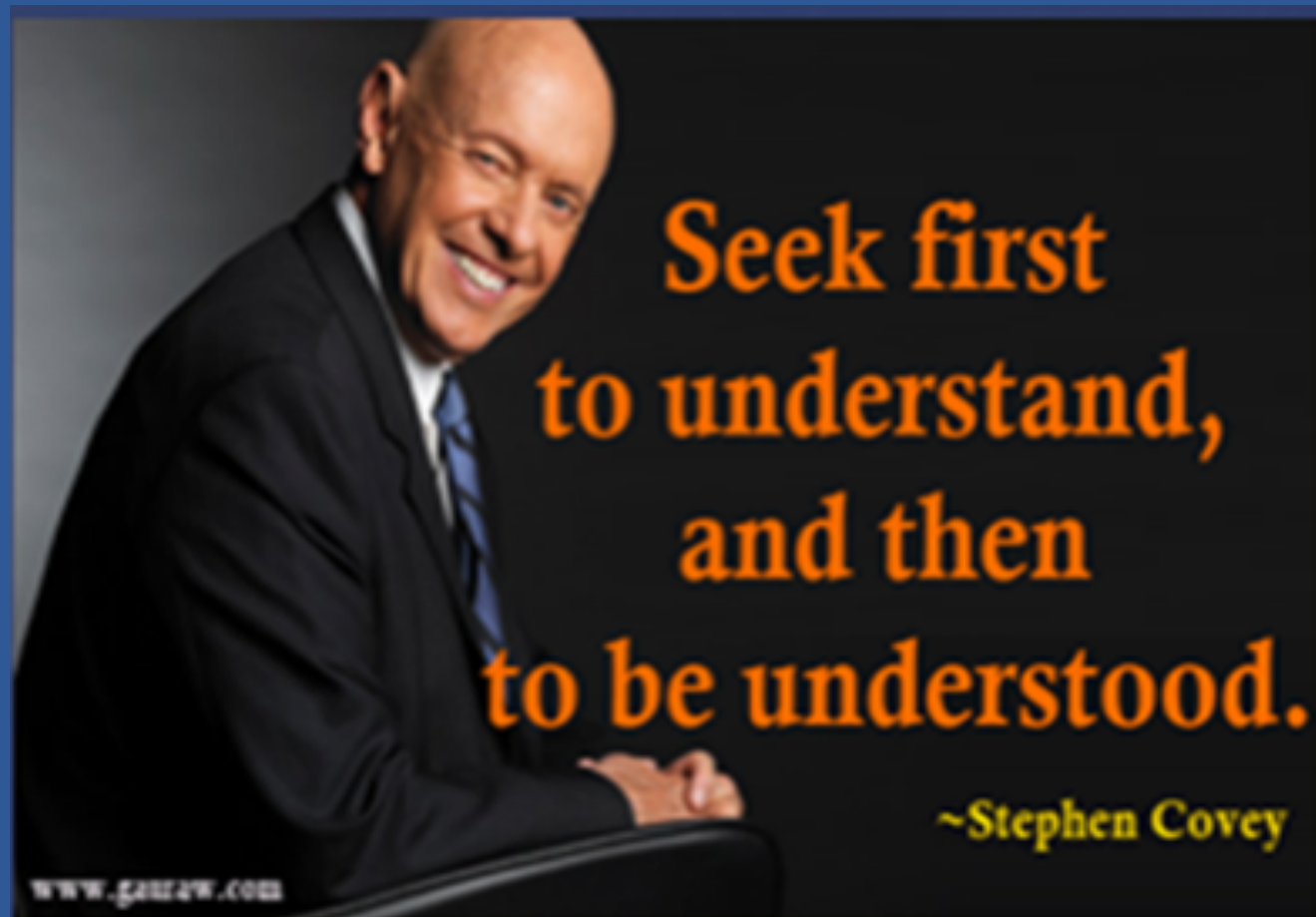




*Let's design our map before  
our journey begins.*



*“Not designing a map before a journey would be like starting a baseball game without discussing the ground rules.”*



Seek first

to understand,

and then

to be understood.

~Stephen Covey



Get  
Results

Demonstrate  
Accountability

Show Commitment

Manage Conflict

Develop Trust



# Six Critical Questions

---

1. Why do we exist?
2. How do we behave?
3. What do we do?
4. How will we succeed?
5. What is most important, right now?
6. Who must do what?

- Patrick Lencioni (2012)





# Essential Question

---



*How will the Clarkstown Central School District determine student grade point averages based on percentages from marking periods and Regents examinations scores?*

