

# Rockland County Coalition for Drug-Free Schools & Communities

Presentation of results of the 2016-  
2017 County-wide PRIDE Survey of  
8th and 11th grade students in  
Rockland County Public Schools  
**Trends, Risks, Prevalence &  
Pro-Social Action**

**Christina C. Pratt, PhD, MSSW**  
Professor of Sociology and Criminal Justice

# Acknowledgments

- Dominican College
- Rockland Coalition- Law Enforcement
- School District leadership & especially student survey respondents
- Michael D'Angelo, Rockland County Planning Department
- Focus Groups of 8<sup>th</sup> & 9<sup>th</sup> graders & STAC students
- Youth as Public Health Change Agents
- Rockland BOCES

# Methodology

- Review of literatures on risks and protective factors for youth re: ATOD
- Synthesis of PRIDE Survey Data 2016-2017 compared to 2010-2011 PRIDE Survey Data
- US Census Data 2010
- American Community Survey 2016
- CDC 2014- Youth Risk Behavior Surveillance
- Interview data 8<sup>th</sup> & 9<sup>th</sup> graders; local college undergraduates on social media, music, ATOD
- Ethnographically: What do we know? Who is missing? Whose narratives are not captured by these data?
- Exemplars & Myths on Adolescent Risk-Taking

# Some Good News

- Protective Factors—Structural strengths to amplify
- School Opportunities for Pro-Social Involvement ranks 21% higher than the national average\*
- On the aggregate, Rockland County schools score significantly higher on protective factors than the national norm.

\*The lowest score- School Rewards for Prosocial Involvement (51) warrants attention as does the risk factor of Low Commitment to School (51).

# Trends: Longitudinal Data

- **Harm to Health**

6 surveys over time with 5<sup>th</sup>, 8<sup>th</sup>, 11-12<sup>th</sup> graders

- 1998
- 2001
- 2004
- 2007
- 2010 - 2011
- 2016 - 2017

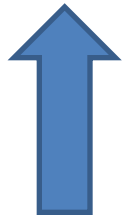
- **Question:** “Do you think \_\_\_\_\_ is harmful to your health?”

## Percent of change over time:

- **Alcohol** – historic decline lowest levels in 20 years for use and binge drinking- 50% decline since 1998.
- **Marijuana is the “new normal”**- daily use w/ vaping
- **Tobacco** – Biggest success story of RC coordinated community youth-led public health campaign
- **Prescriptive Drug use is on the rise** Adderall; Xanax; Percocet; Ritalin; \*RXO -> heroin pathway is lethal and underexplored

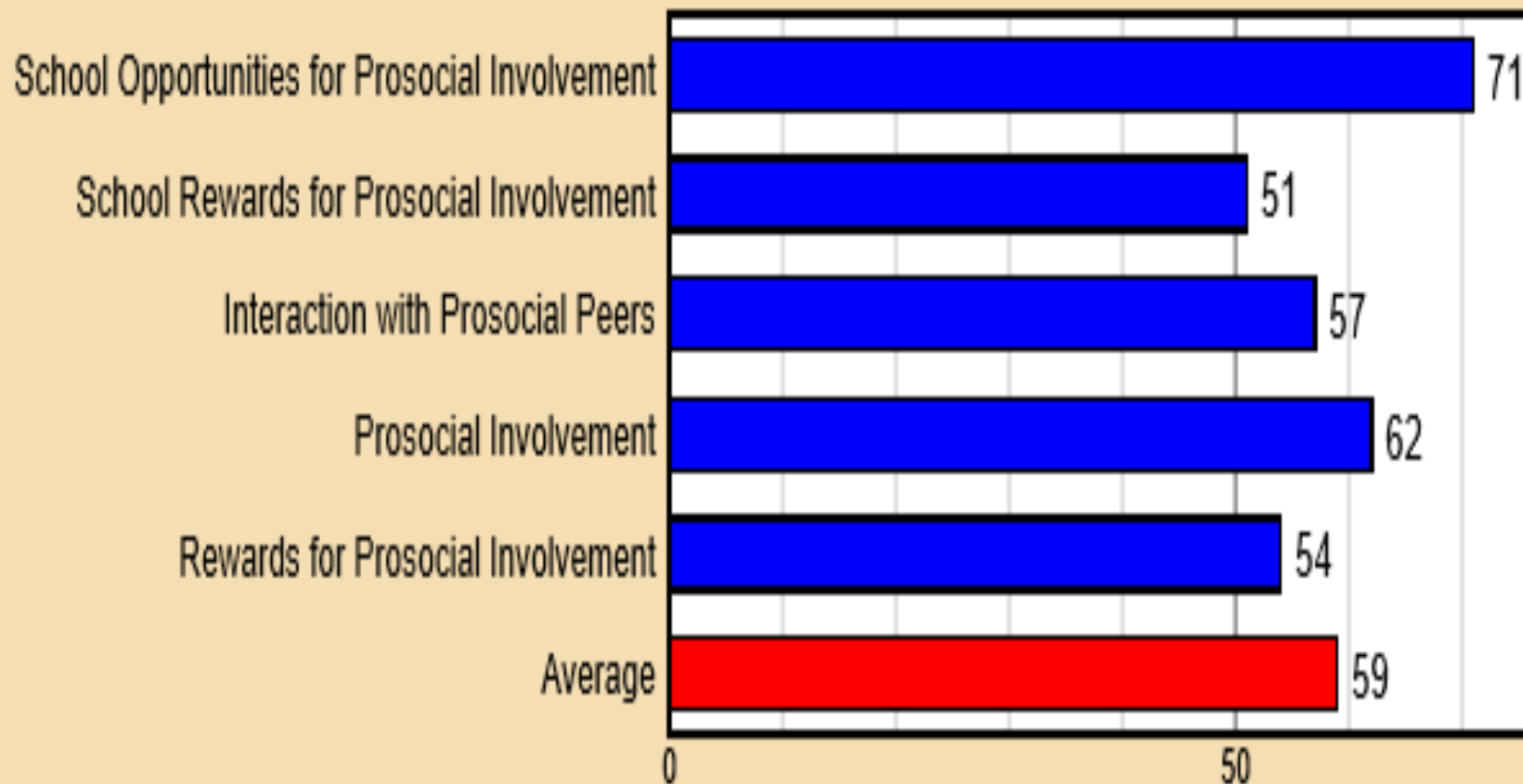
# More Good News

- Thanks to public health campaigns; PSAs; youth-led “stings” (the CVS story) AND
- Community collaboration- Education- Parents- Public Health- Law Enforcement
- Tobacco is at its lowest reported prevalence of use.
- Not so good- Marijuana use



# Rockland County PRIDE Overall Protective Factor Scale Scores

## Overall Protective Factor Scale Scores



# Overall Good News

- While there is variation across, between, and disparities within school districts, overall, the PRIDE snapshot of Rockland County public schools and their surrounding communities highlights attentive parents and teachers who care about youth well-being in neighborhoods that appear more organized and cohesive than the reported national norm.



# Demographics of PRIDE Youth

Table 1.1: Selected Demographic Characteristics of Surveyed Youth

	Number of Students	Percentage of Students
Overall Valid Surveys	4862	100.0%
<b>Sex</b>		
Male	2281	46.9%
Female	2361	48.6%
Did not respond	220	4.5%
<b>Ethnicity</b>		
White	2276	46.8%
African American	450	9.3%
Hispanic/Latino	1035	21.3%
Asian/Pacific Islander	349	7.2%
Native American	16	0.3%
Mixed Origin	408	8.4%
Other	202	4.2%
Did not respond	126	2.6%

Note: Rounding can produce totals that do not equal 100%.

# PRIDE 8<sup>th</sup> and 11<sup>th</sup> Graders [2016-17]

- **Number surveyed:**

8<sup>th</sup> & 11<sup>th</sup> = 4,862

[80% of total enrolled  
NYSED]

[10% < 2011 PRIDE]

8<sup>th</sup> = 2,587 (53.2%)

11<sup>th</sup> = 2,275 (46.8%)

46.9% male

48.6% female

\* 5% no response

- 46.8% Caucasian
- 21.3% Latino
- 9.3% African American
- 7.2% Asian/PI
- .3% Native American
- 8.4% Mixed Origin
- \* 6.8% Other/No Response

*Compared to:*

*ACS 2016 RC estimates*

*~63% Caucasian;*

*13% African American;*

*17% Latino; 12% Asian*

# US Census American Community Survey for RC 2010 -2016

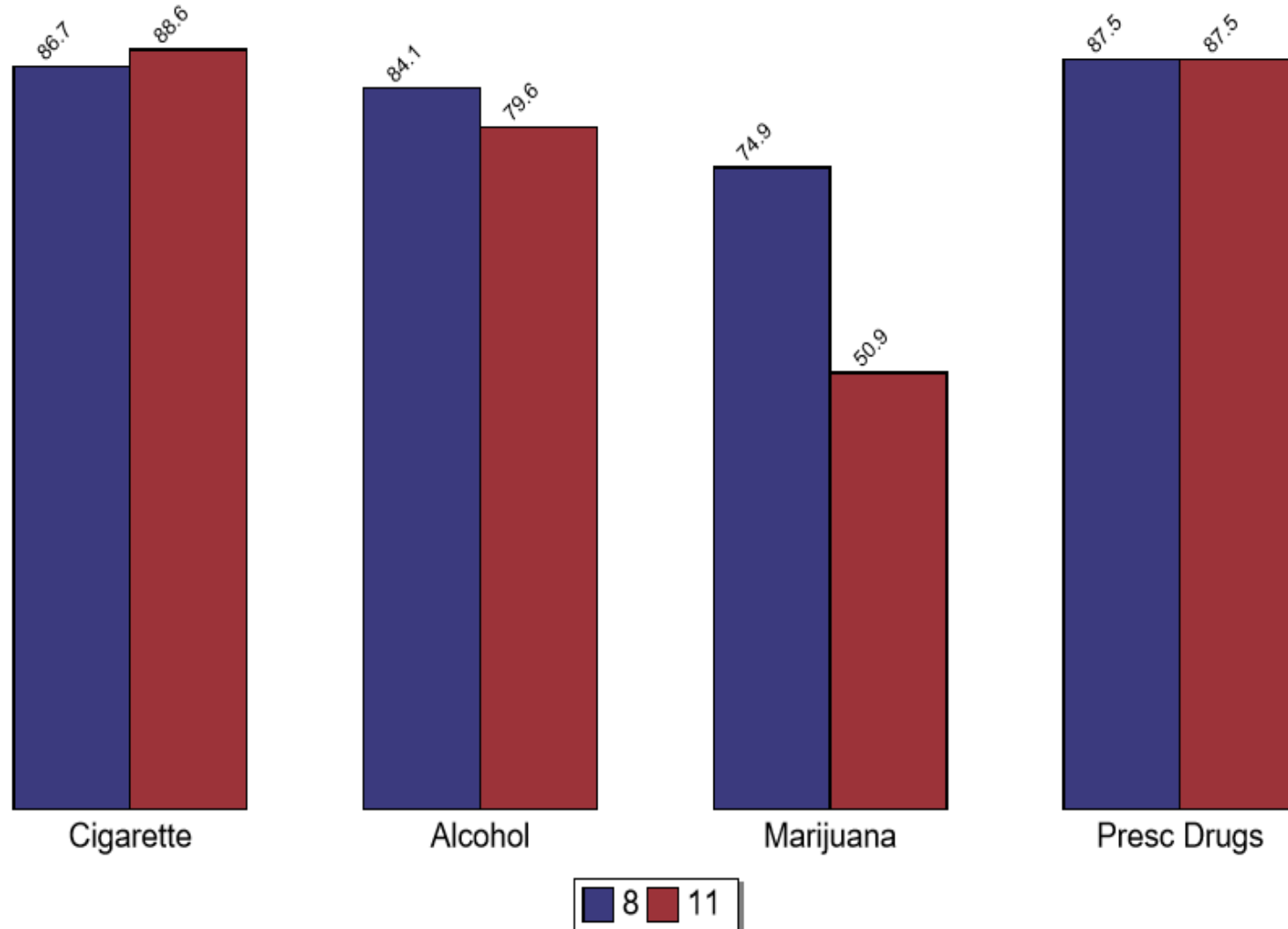
- 1:4 children under 18 live in households below the poverty line (24.9%)
- English-only in 62% of families
- Other first language spoken in 38% of families:
  - Spanish (13%);
  - Indo-European (19%)\*
  - Asian (5%)\*\*
- 22% of children are foreign born
- Total population over 3 in school = 95,405
- Total population in public schools = 54,147  
**~57%**
- Total population in private schools = 41,258  
**~43%**

# Availability for 8<sup>th</sup> and 11<sup>th</sup> grades

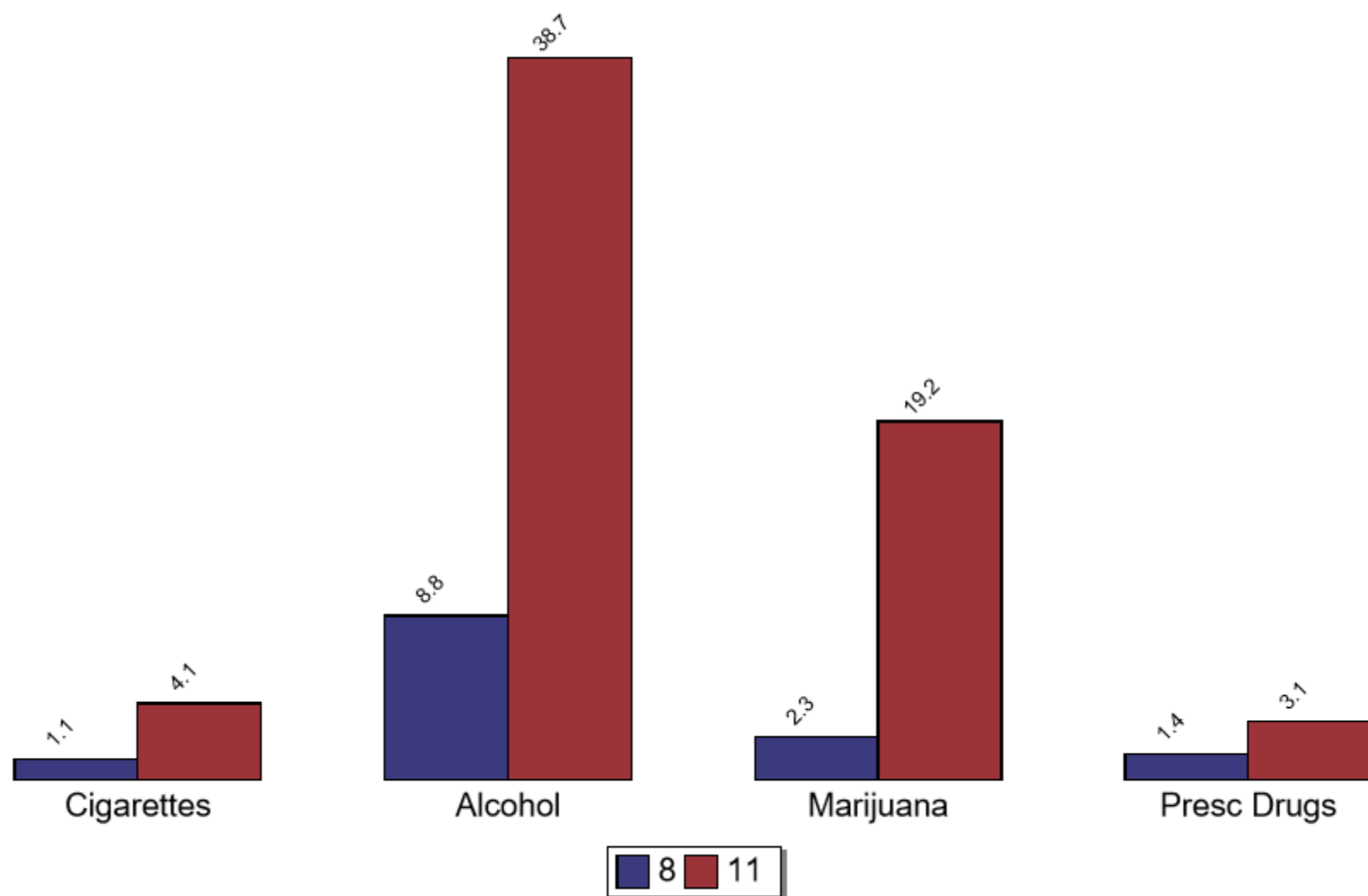
- Legal drugs are harder to get today than at any other point over the 18 years of PRIDE surveys
- Illegal and prescription drugs are easier to get
- **In 2017, in Rockland County, especially for 11<sup>th</sup> graders, it is as easy to get marijuana or prescription drugs as it is to get a cigarette.**

# Alcohol, Tobacco, and other drugs

Perception of Risk of Using Cigarettes, Alcohol, Marijuana & Prescription Drugs As Moderate Risk or Great Risk

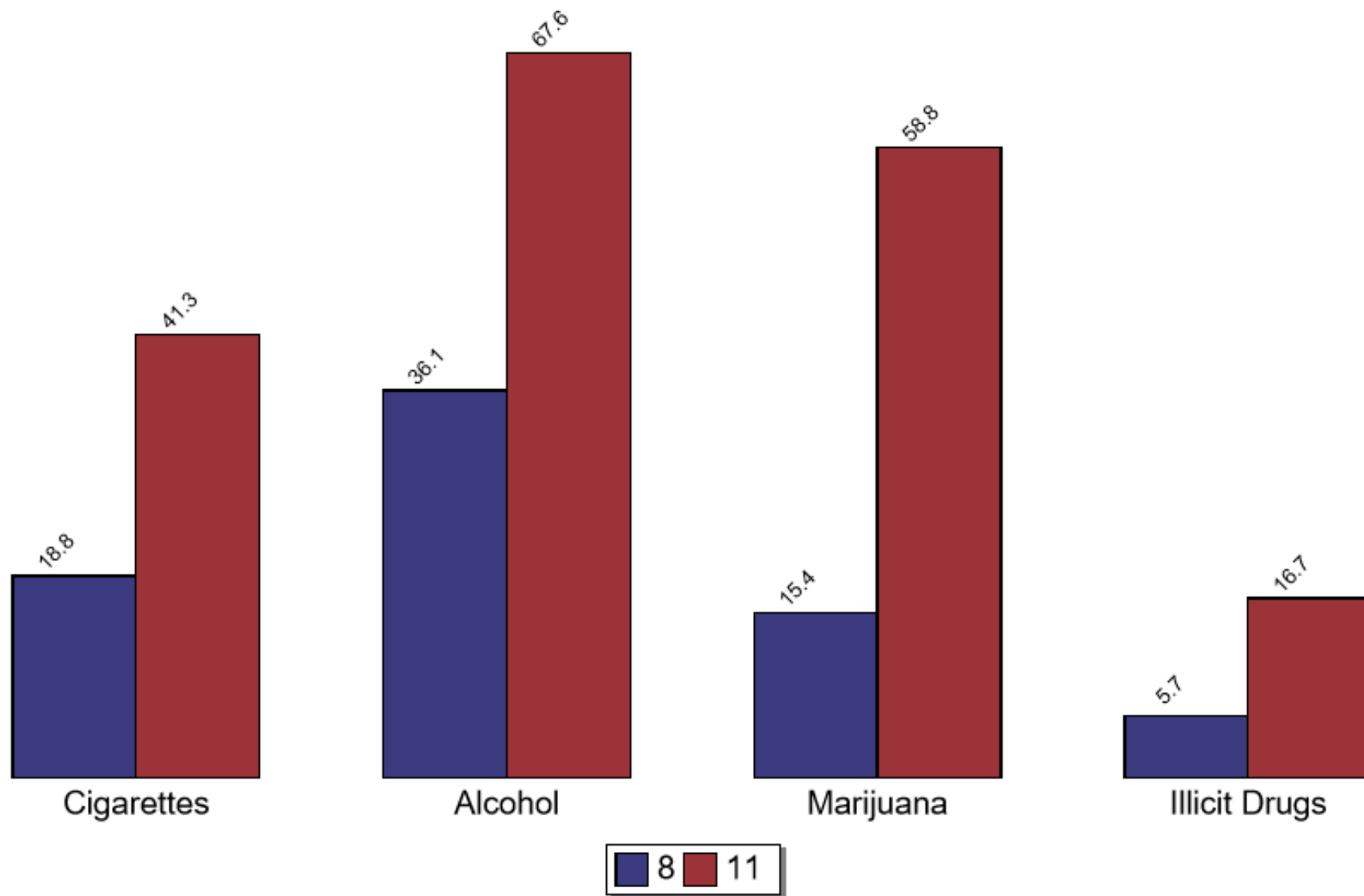


## % Students Who Have Used Cigarettes, Alcohol, Marijuana & Prescription Drugs in the Past 30 Days



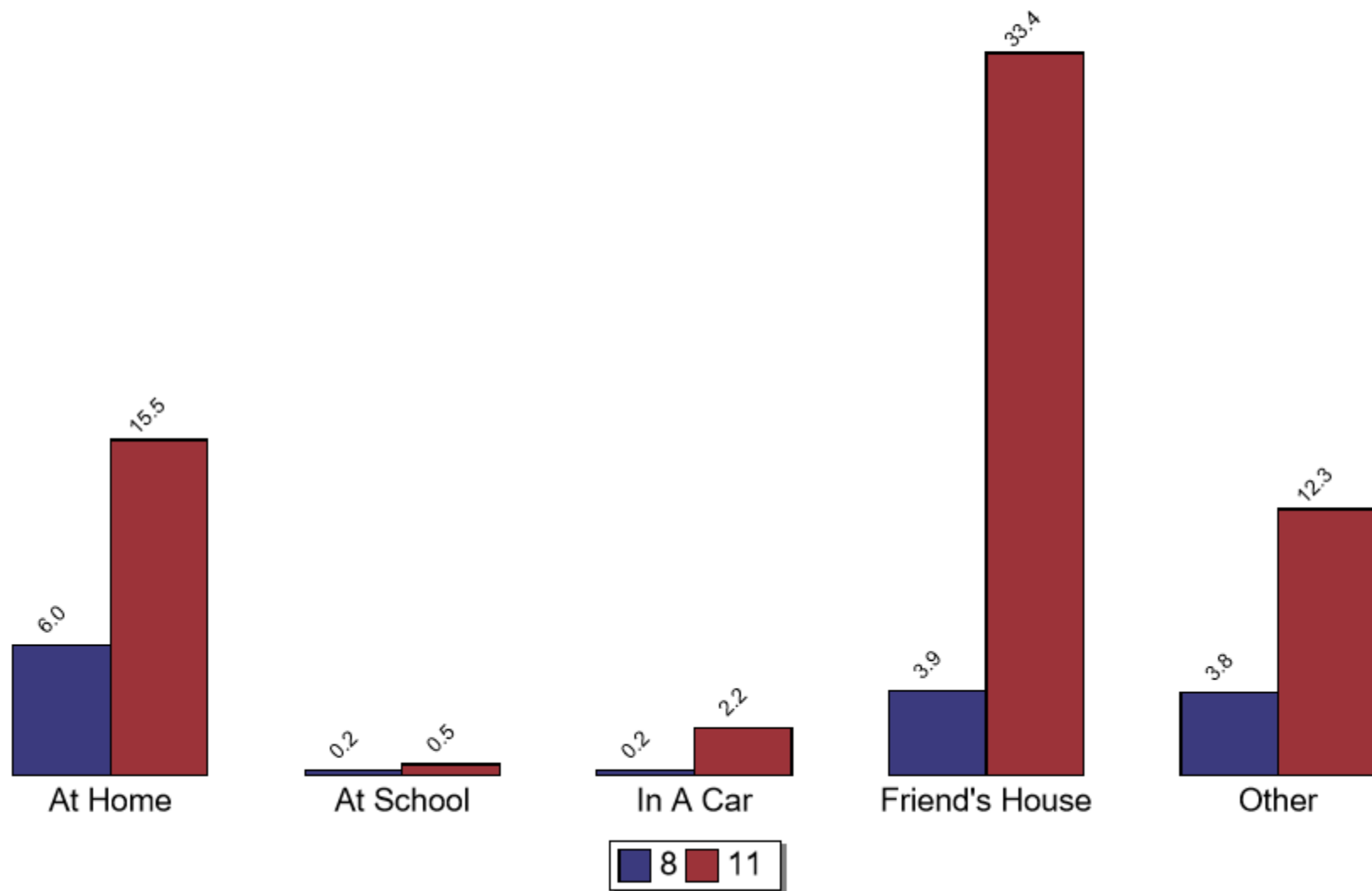
Source: Pride Surveys

## Perception That Tobacco, Alcohol, Marijuana and Illicit Drugs Is Sort of Easy or Very Easy To Get



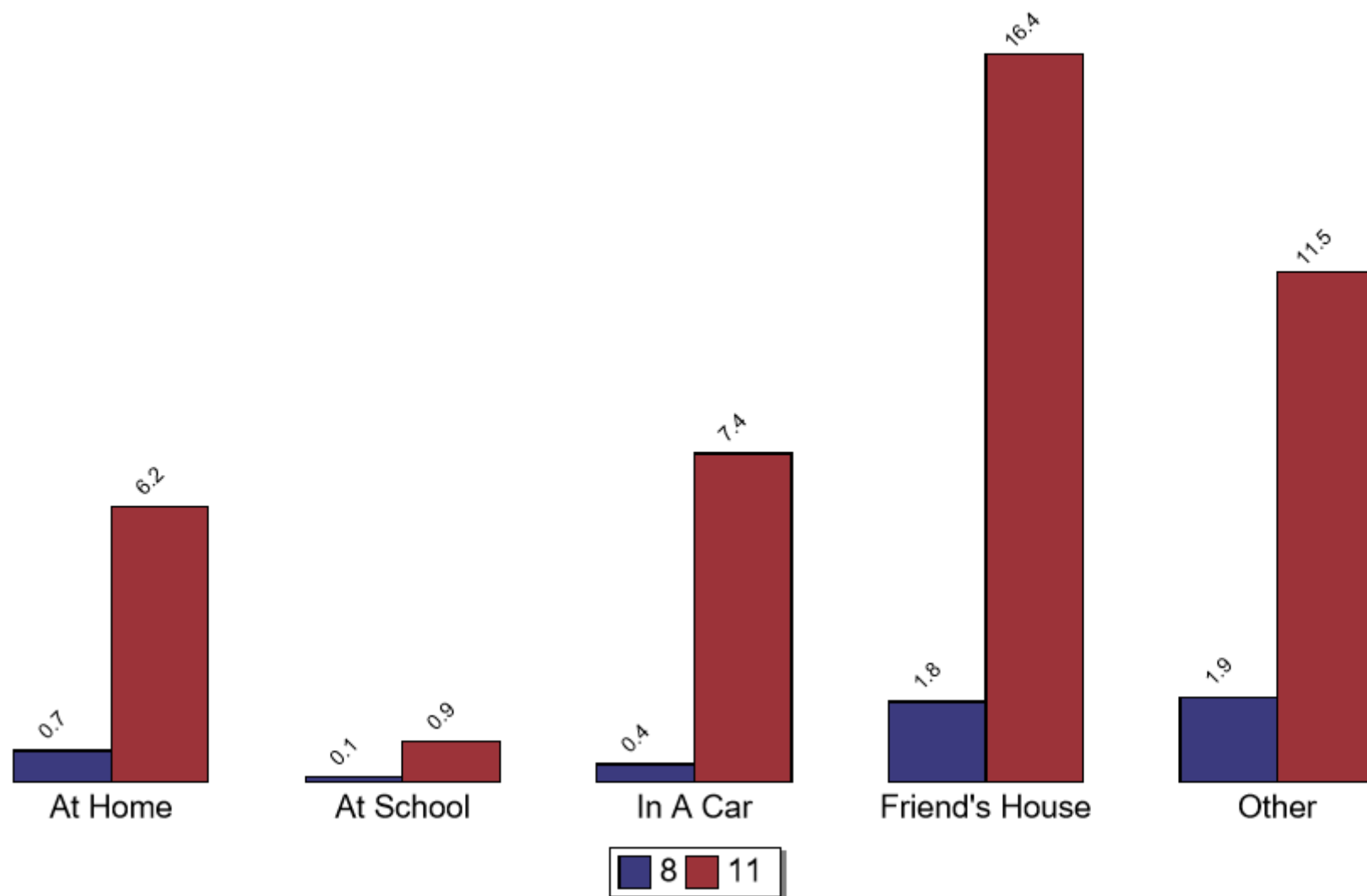
Source: Pride Surveys

## Where Do You Use Alcohol



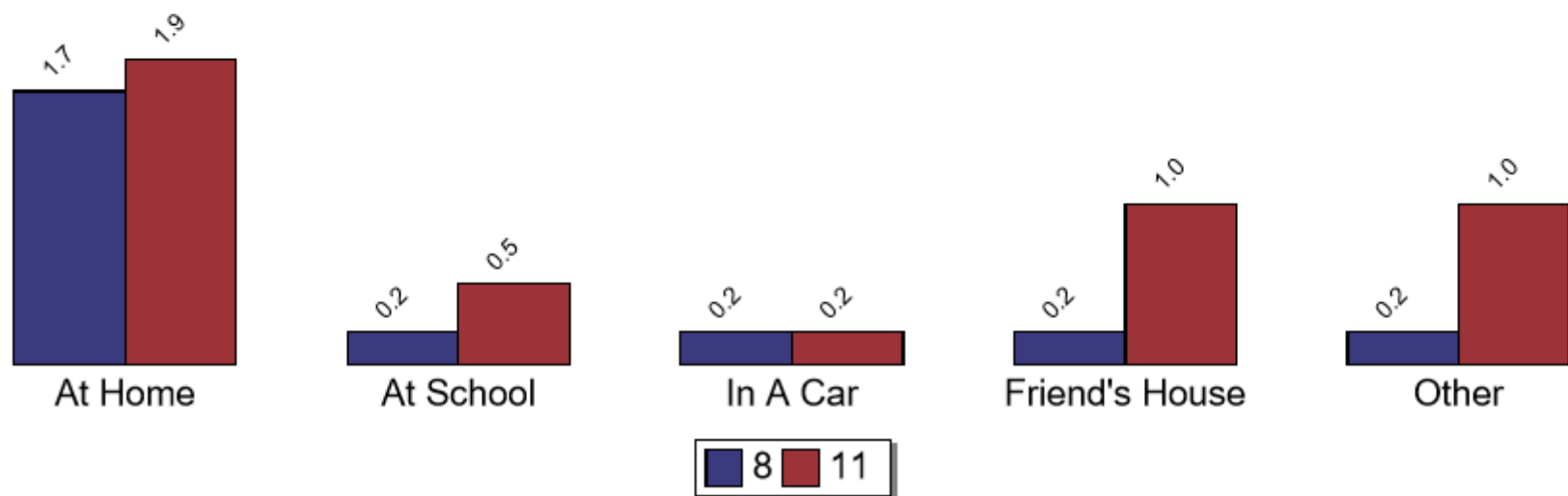


## Where Do You Use Marijuana

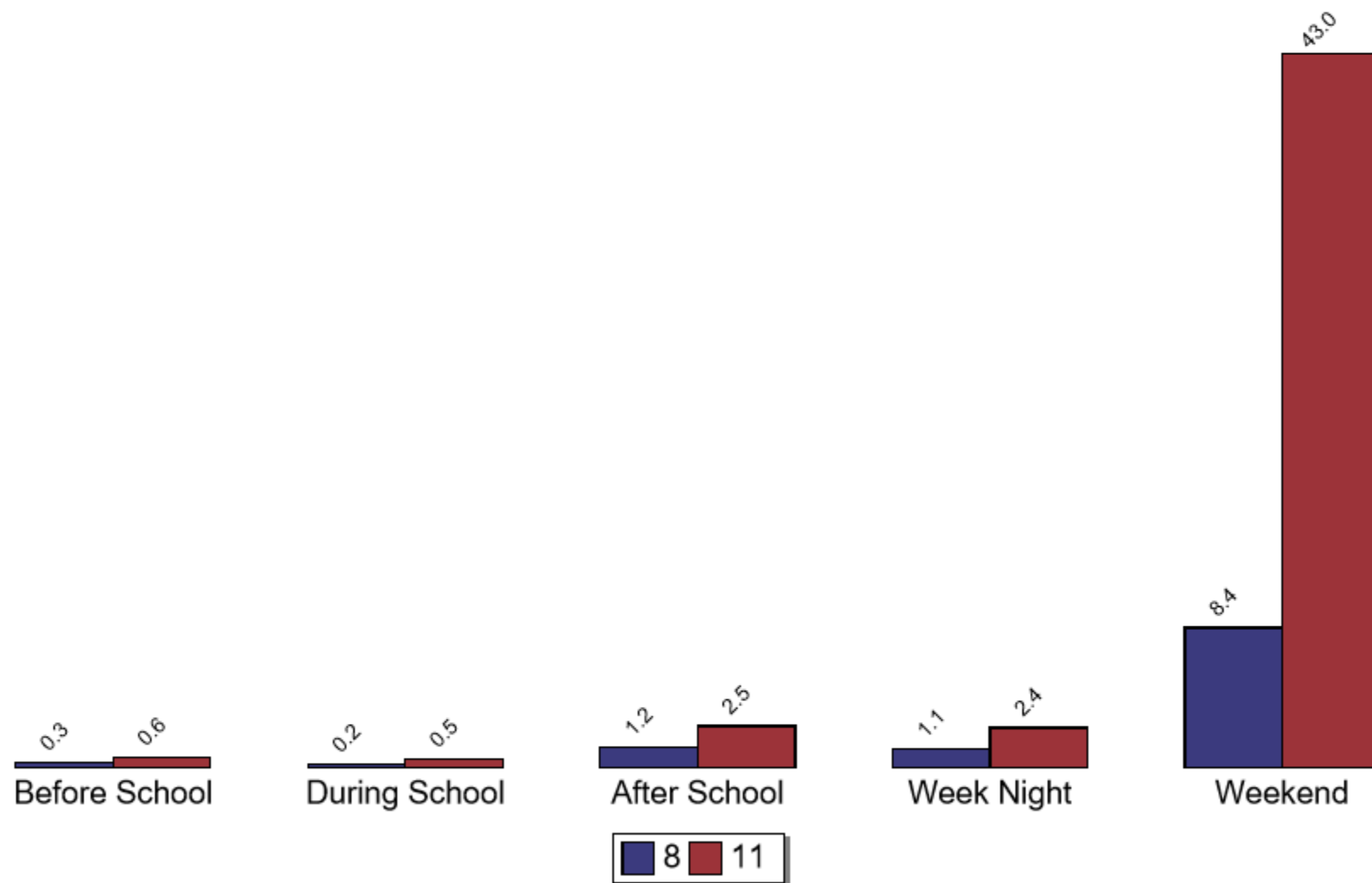


Source: Pride Surveys

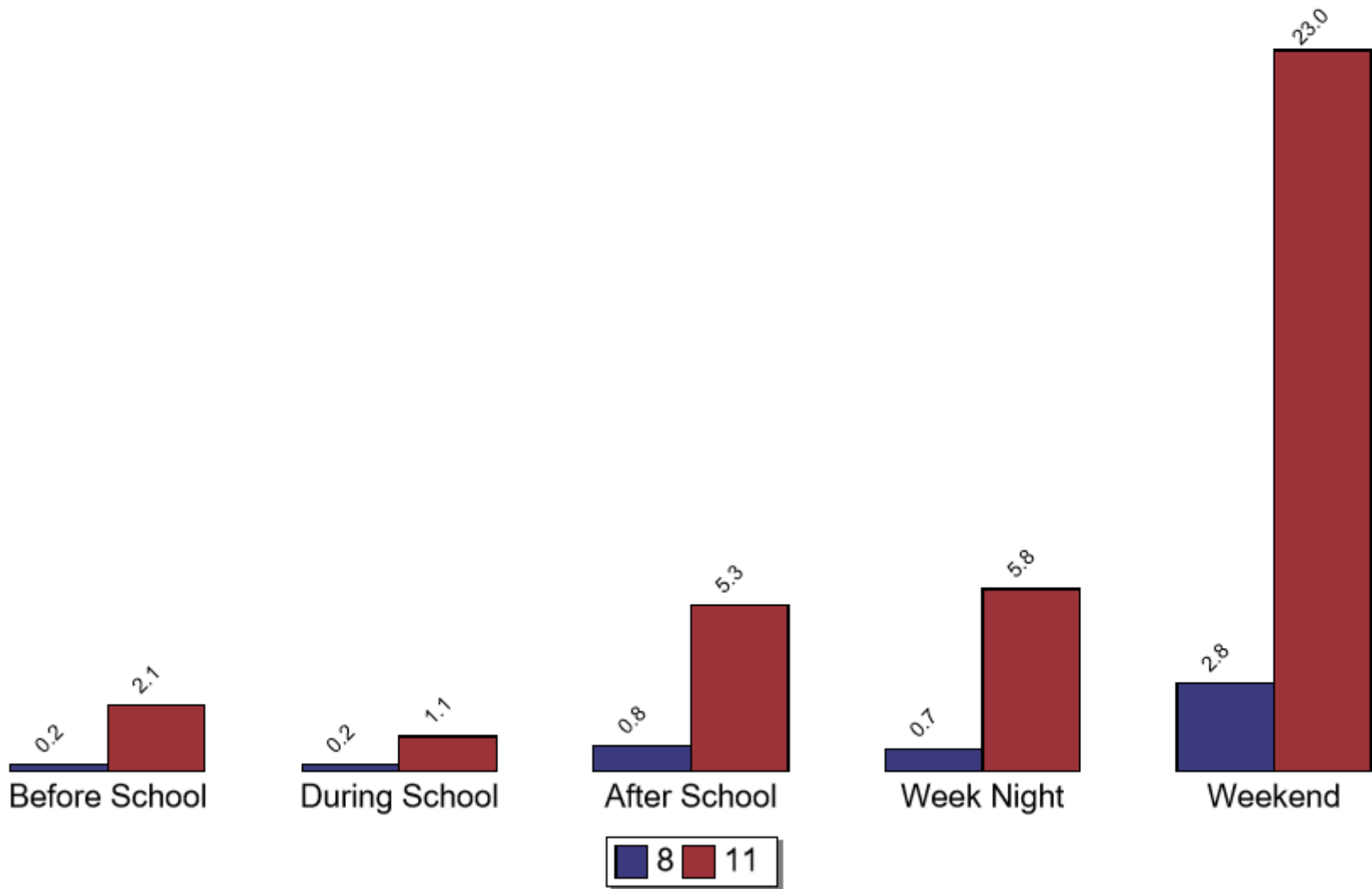
## Where Do You Use Presc Drugs



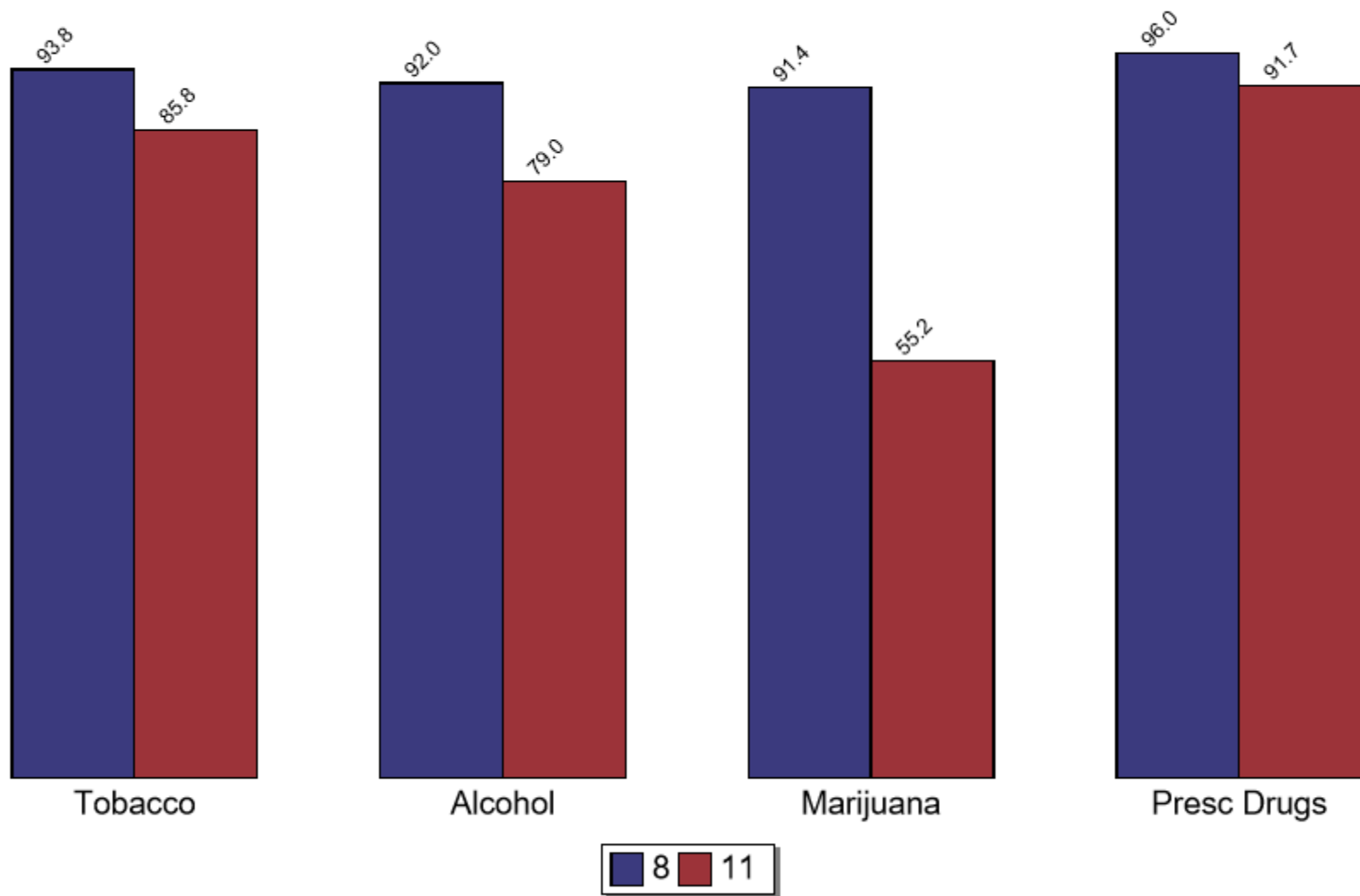
## When Do You Use Alcohol



## When Do You Use Marijuana



## Perception That Friends Would Feel It To Be Wrong or Very Wrong To Use Tobacco, Alcohol, Marijuana & Presc Drugs



Source: Pride Surveys

Students' prevalence-of-use rates in the past year:

- alcohol (35.7%)
- marijuana (16.9%)
- tobacco (6.7%)
- prescription drugs (4.1%)
- synthetic marijuana (2.0%).

Prevalence of use rates in the past 30 days was highest for alcohol (23.0%) followed by marijuana (10.3%), cigarettes (2.5%), and prescription drugs (2.2%).

# Use: Where and When?

- Friends house
- On weekends
- Unchanged over time– a constant finding
- Lesson learned?
- Collaborative community response
- Watchful guardians and amplified protection
- Pro-social weekend and evening opportunities

# Unknown Use- Not Queried

Vaping “tastes good; lots of flavors” marketed to youth

Performance- Enhancing

Gym “Supplements”

Cough Syrup

“Lean”

RXO -> heroin pathway\*

Others? Youth suggest

Adderall; Ritalin; Xanax;

Percocet (“Perkys” YouTube)

Psilocybin (Mushrooms)



# “Lean”

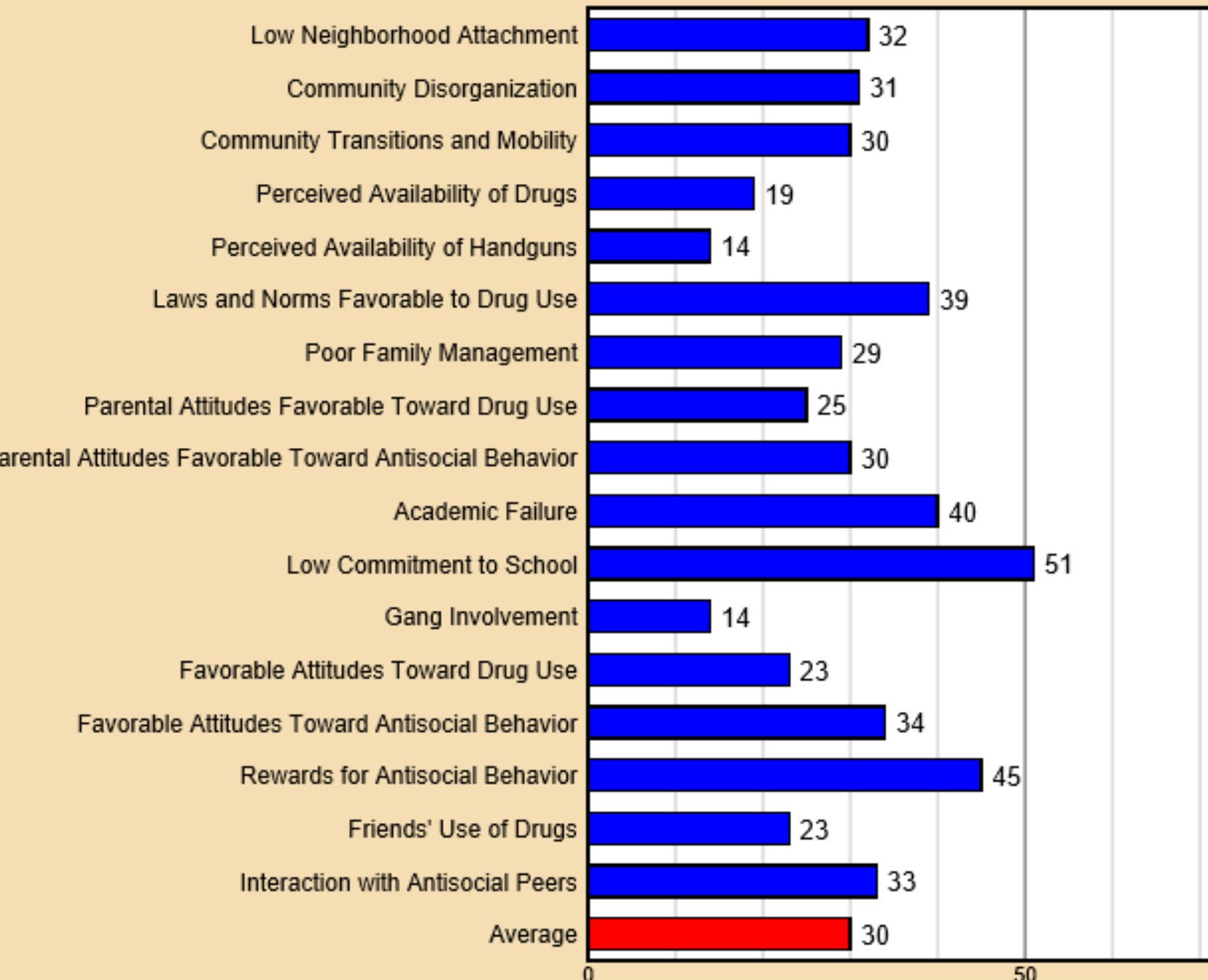
"Purple Drank", "Dirty Sprite" or "Lean" in a double Styrofoam cup is glorified in popular music and on YouTube. Lean is "Hip-Hop's New Heroin" with two active ingredients RX Codeine (cough syrup) & Promethazine (anti-histamine) which act as Central Nervous System Depressants. See "Codeine Crazy" by *Future*

<https://www.youtube.com/watch?v=Kwg>



h

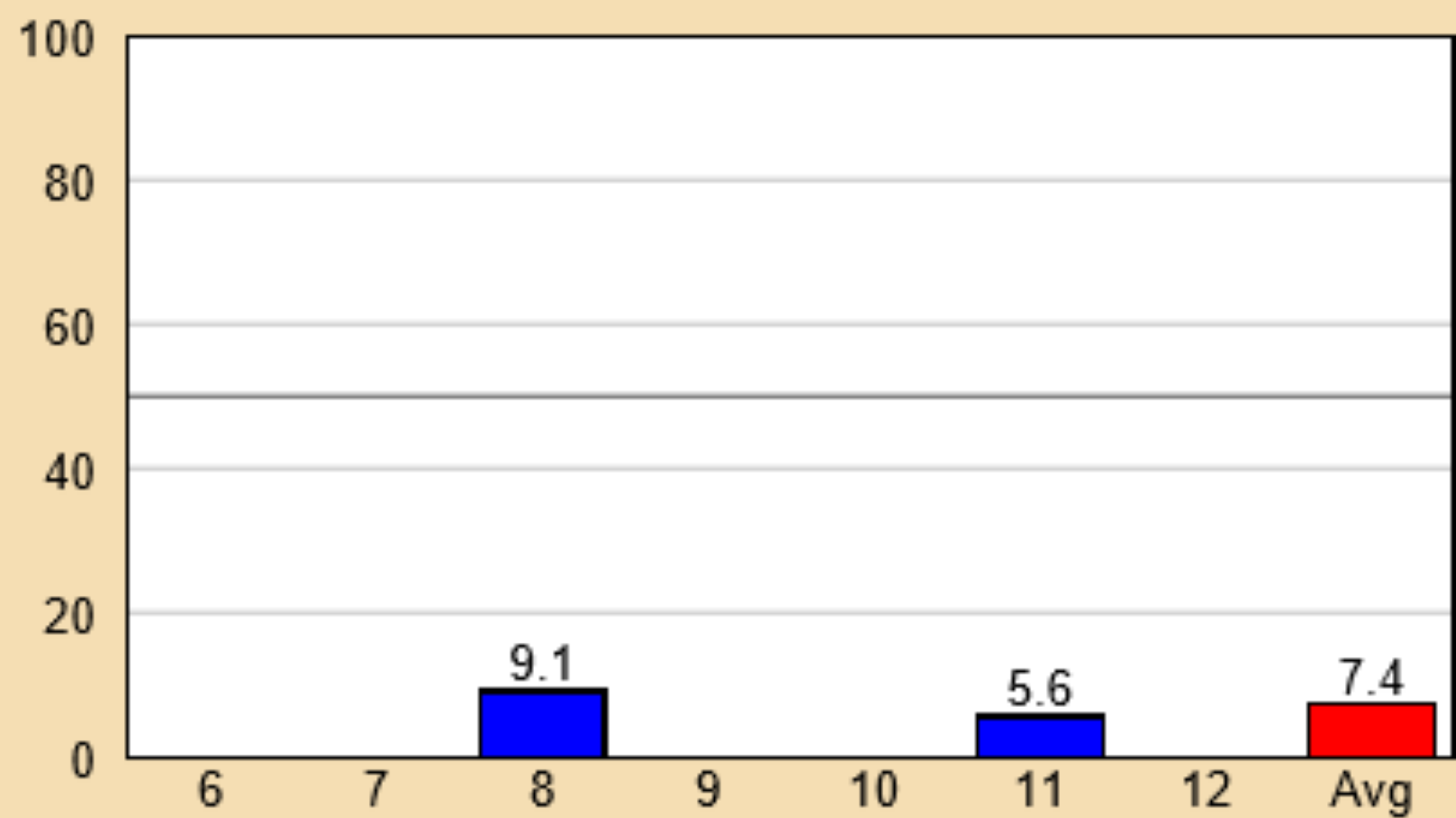
# Overall Risk Factor Scale Scores



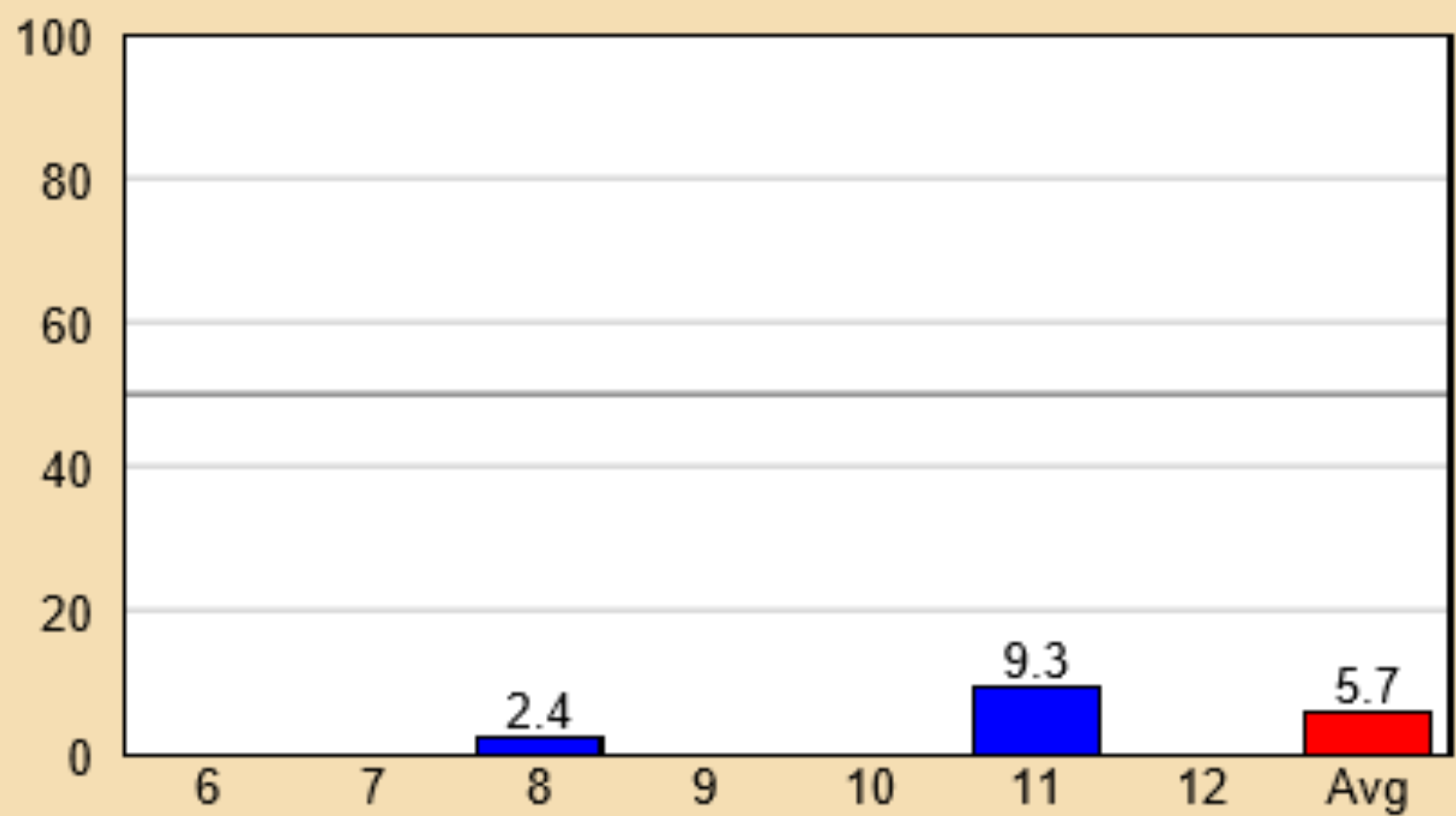
# Anti-Social Behaviors

Antisocial behavior prevalence rates for the combined sample, across all grades:

- 7.4% reported Getting Suspended in the past year, making it the most prevalent of the eight risk-oriented behaviors.
- Being Drunk or High at School is the second most prevalent antisocial behavior at 5.7%.
- The least prevalent behavior was Taking a Handgun to School at 0.6%.



Getting Suspended



Being Drunk or High at School

Table 7.30: In the past year, how many of your best friends have tried beer, wine or hard liquor their parents didn't know about it?






RESPONSE	8th	11th	6-8th	9-12th	TOTAL	
None of my friends	75.3	30.7	75.3	30.7	54.1	<div></div>
1 of my friends	10.9	10.9	10.9	10.9	10.9	<div></div>
2 of my friends	5.6	12.4	5.6	12.4	8.8	<div></div>
3 of my friends	3.4	9.5	3.4	9.5	6.3	<div></div>
4 of my friends	4.8	36.5	4.8	36.5	19.8	<div></div>
N of Valid	2483	2241	2483	2241	4724	
N of Miss	104	34	104	34	138	

Table 7.31: In the past year, how many of your best friends have used marijuana?

RESPONSE	8th	11th	6-8th	9-12th	TOTAL	
None of my friends	86.9	41.7	86.9	41.7	65.5	<div></div>
1 of my friends	6.6	13.4	6.6	13.4	9.8	<div></div>
2 of my friends	2.8	14.1	2.8	14.1	8.1	<div></div>
3 of my friends	1.4	8.7	1.4	8.7	4.9	<div></div>
4 of my friends	2.2	22.1	2.2	22.1	11.7	<div></div>
N of Valid	2472	2228	2472	2228	4700	
N of Miss	115	47	115	47	162	

# School Suspension

Table 7.33: In the past year, how many of your best friends have been suspended from school?

RESPONSE	8th	11th	6-8th	9-12th	TOTAL	
None of my friends	69.9	76.6	69.9	76.6	73.1	
1 of my friends	15.6	13.2	15.6	13.2	14.5	
2 of my friends	7.4	5.3	7.4	5.3	6.4	
3 of my friends	2.8	1.7	2.8	1.7	2.2	
4 of my friends	4.4	3.2	4.4	3.2	3.8	
N of Valid	2493	2235	2493	2235	4728	
N of Miss	94	40	94	40	134	

# Other Social Stresses

- CDC (2014) reports particular risk factors for youth from low-resourced neighborhoods where English is not a first language:
- Discrimination
- Negative Self-Image
- Higher Levels of Stress
- Peer Drug Use & Reduced Social Disapproval for Drug Use



# Grade- Level Results

Table 2.1: Protective Factor Scale Scores Reported by Surveyed Youth, by Grade

		6th	7th	8th	9th	10th	11th
<b>School Domain</b>							
	School Opportunities for Prosocial Involvement	–	–	72	–	–	69
	School Rewards for Prosocial Involvement	–	–	56	–	–	46
<b>Peer-Individual Domain</b>							
	Interaction with Prosocial Peers	–	–	63	–	–	50
	Prosocial Involvement	–	–	60	–	–	65
	Rewards for Prosocial Involvement	–	–	57	–	–	50
<b>Average</b>		–	–	62	–	–	56

# Exemplars to Navigate Success

- Positive Alternatives to School Suspension
- Mentoring as a template for self-help- especially for youth identified with behavioral health issues and/or whose parent(s) are challenged with lives intersecting ED (attrition)/CJ/ MH/ SU—transitioning into young adulthood is fraught with obstacles
- Grassroots community-inspired, culture and youth-informed role models within supportive environments for emerging self-efficacy & well-being. To live, learn, work & participate fully in community.

# Myths About Adolescent Risk Taking

1. “We were better”- compared to kids in 1991, today’s teens carry fewer weapons, eschew tobacco, have lower rates of binge drinking and unprotected sex, use seatbelts and condoms. Of significance, cannabis is more prevalent with prescriptive drug abuse as the greatest threat. Heroin is cheaper than RXO.
2. Invincibility? Teens feel as vulnerable as adults do.

# More Myths

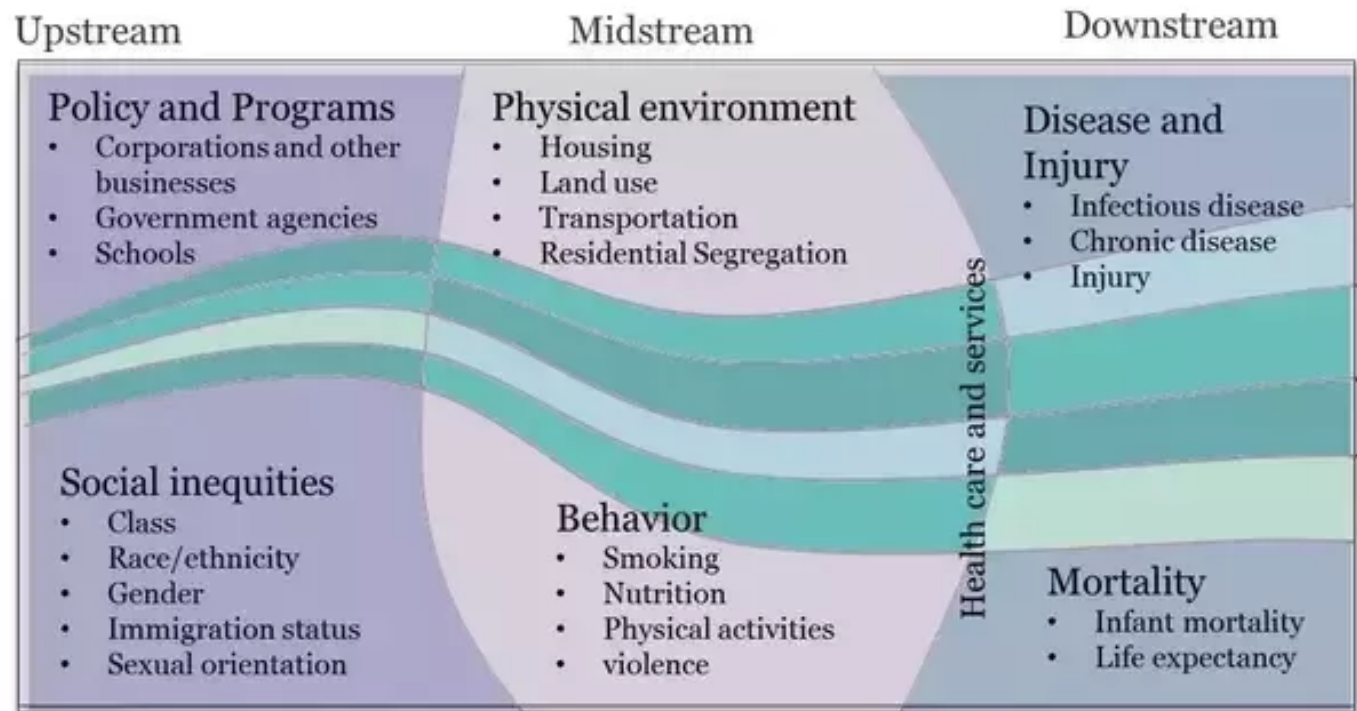
3. Teens are immune to adult influence.

Do not be put off by the eye-roll!

Where there are open lines of communication, available & understanding parents, guardians, mentors, teachers, teens take fewer health & sexual risks when there is accurate talk about drugs, sex & contraception; Drive more safely; uphold rules & and tend to be less likely to use alcohol and other drugs.

# Thank you!

- Please contact me for sources, questions, models, jokes...
- [cpratt@stac.edu](mailto:cpratt@stac.edu)



Government. Schools. CBOs → Parks & Housing → Hospitals & Clinics

# Additional Data

2010 Census, 2011-2015 American Community Survey and New York State Department of Education 2015-2016 School Report Cards for Rockland County and its School Districts.

- Population by Single Year Age: 10 to 18 years old (2010 Census)
- Population by Gender (2011-2015 ACS)
- Population by Race (2011-2015 ACS)
- Population by Hispanic Origin (2011-2015 ACS)
- Population by Age Group (2011-2015 ACS)
- Population Below Poverty Level (2011-2015 ACS)
- Population Under 18 years Below Poverty Level (2011-2015 ACS)
- Median Household Income (2011-2015 ACS)
- Median Family Income (2011-2015 ACS)
- Population by Age Group Enrolled in Public School (2011-2015 ACS)
- Population by Age Group Enrolled in Private School (2011-2015 ACS)
- Population by Grade Level Group Enrolled in Public School (2011-2015 ACS)
- Population by Grade Level Group Enrolled in Private School (2011-2015 ACS)
- Population by Grade Level Group Enrolled in Public and Private School (2011-2015 ACS)
- Population by Nativity (2011-2015 ACS)
- Population Under 18 Years Old by Nativity (2011-2015 ACS)
- Population by Language Spoken at Home (2011-2015 ACS)
- Public School Enrollment by Grade Level (NYSED School Report Cards)