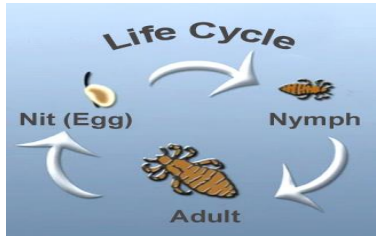


CLARKSTOWN CENTRAL SCHOOL DISTRICT

HEAD LICE INFORMATION



Eggs or “nits” are about 1/25 inch long, cream colored, and are cemented to hair shaft, close to the scalp.

Head lice are wingless, grayish-white, tan or light brown flattened insect about

Head Lice Facts

- Do not cause disease
- Infest behind ears and nape of neck first
- Cannot hop, jump, or fly
- Spread by head to head contact

Prevention

- Keep long hair tied back
- Do not share combs, hair brushes, and hats
- Avoid head to head contact (consider playdates/sleepovers)
- Thorough inspection is ESSENTIAL

BE PROACTIVE CHECK FREQUENTLY

“Early detection means easier resolution”



Critical Steps to Control an Infestation

- The use of an effective head louse treatment
(Please check first with your primary healthcare provider.)
- Nit removal from the head (combing)
(This means picking/removing all the nits, may take several attempts.)
- Removal of lice and nits from the household environment
(Vacuuming, washing, or freezing objects suspected being infested.)
- Daily head checks and nit removal until resolved, followed by weekly head checks to detect re-infestation
- Check your entire family and notify close contacts